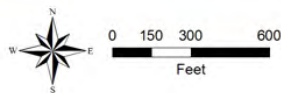


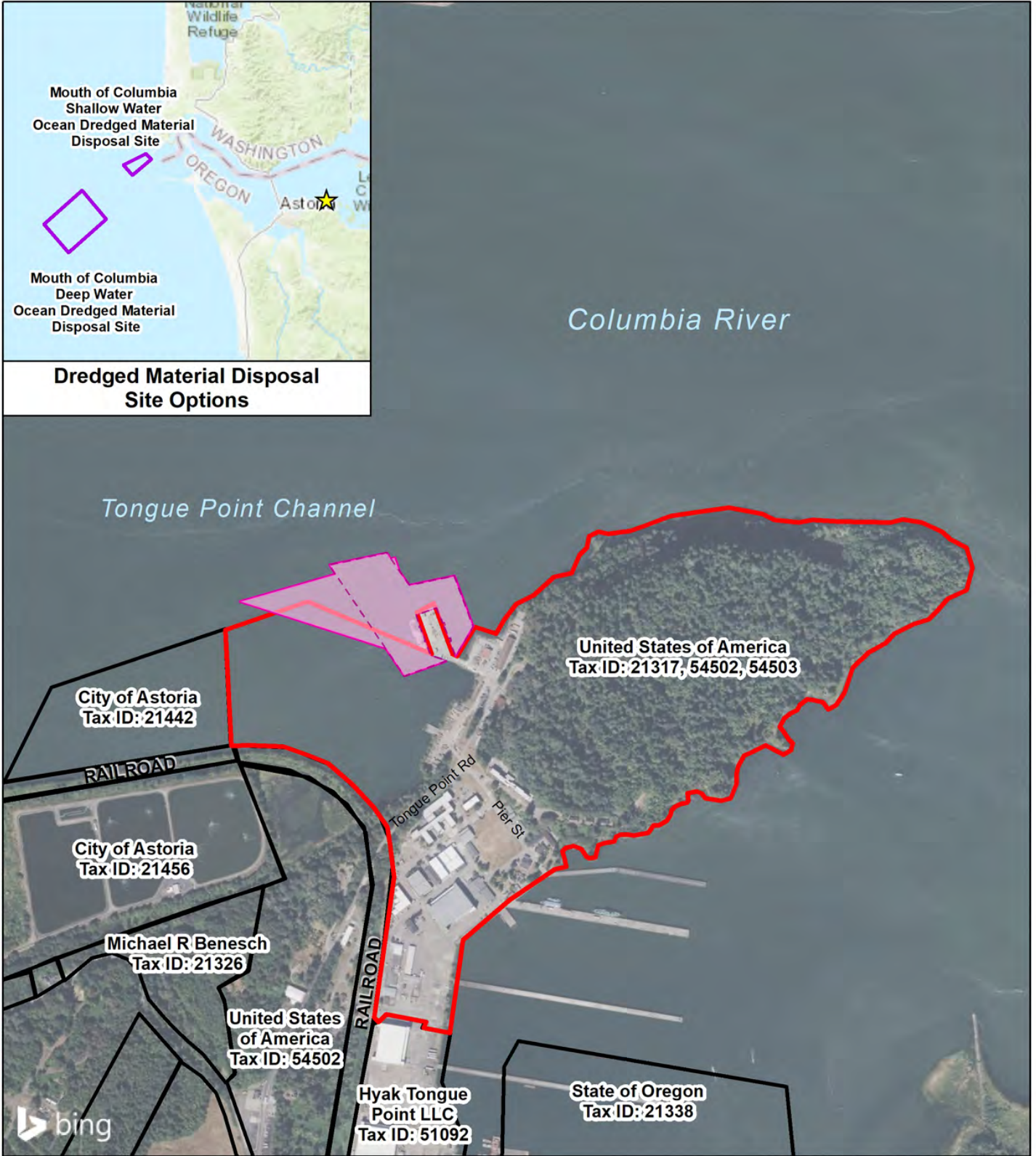
Document Path: H:\TIG\USCG\ANT\USCG ANT Tongue Point\BEP 2023\JPA\Location and Vicinity...JPA - Tongue Point.mxd
 HAH 3/23/2023...JMS 8/24/2023

Figure 1. Vicinity Map, USCg ANT Tongue Point, Maintenance Dredging Project
 Astoria, Oregon
 September 2023

Legend

-  Site Location
-  Potential Disposal Location
-  2023/2024 Dredge Footprint
-  Maintenance Dredge Footprint (DMMU 1)





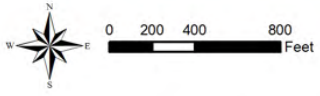
Dredged Material Disposal Site Options

**Figure 2. Taxlot Map
USCG ANT Tongue Point
Maintenance Dredging
Project**

Astoria, Oregon
September 2023

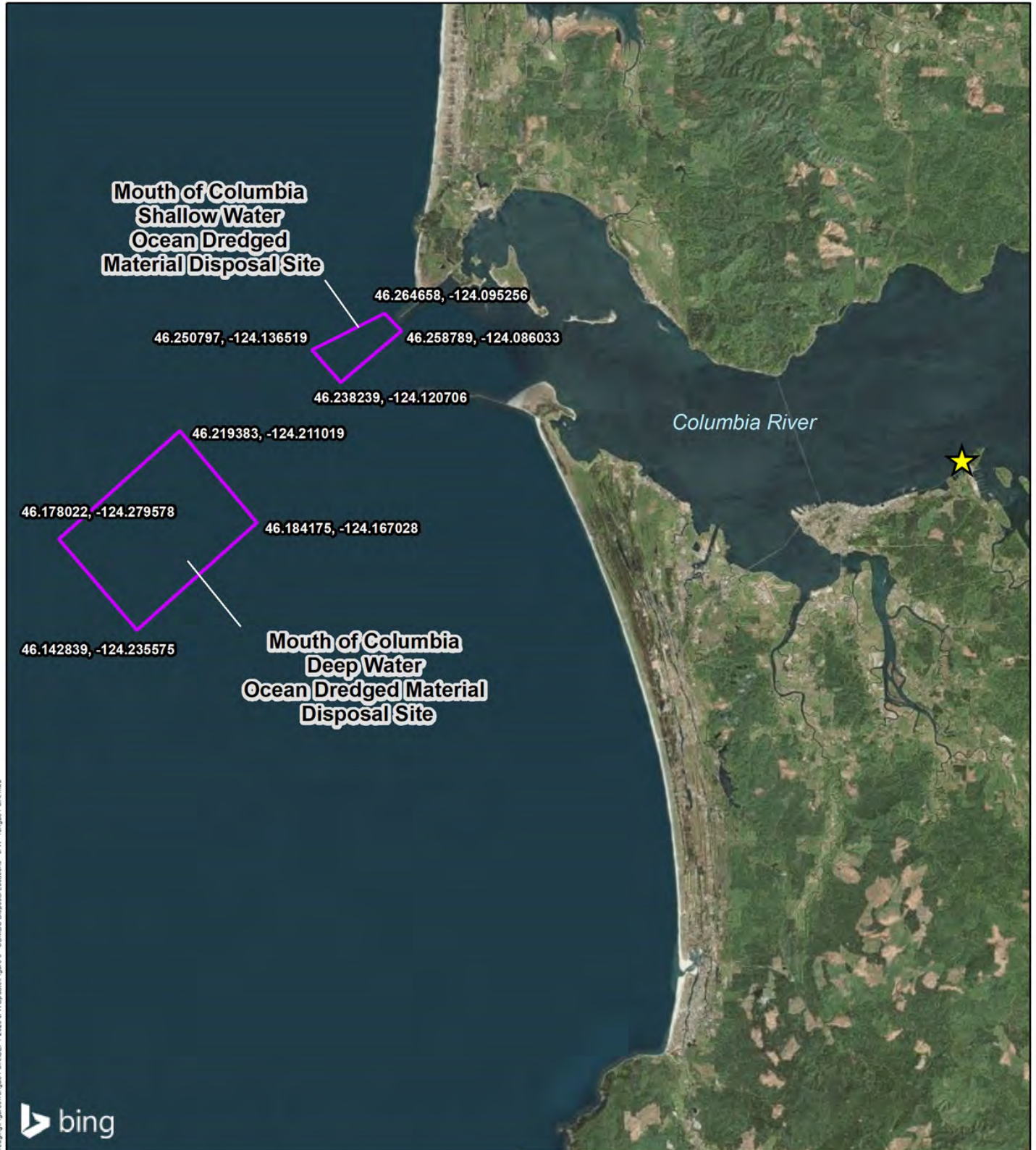
Legend

- ★ Site Location
- ▭ Tax Parcel Boundaries
- ▭ USCG ANT Tongue Point Tax Parcel
- ▭ Potential Disposal Site
- ▭ 2023/2024 Dredge Footprint
- ▭ Maintenance Dredge Footprint (DMMU 1)



Document Path: H:\TIG\USCG\CDU-Civilian\020505011 - Dredging\Figures\Tongue Point\BEPF 2023 - 2024\USCG ANT Tongue Point.mxd

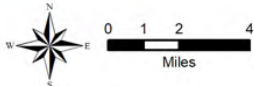
HAH 4/4/2023, JMS 6/15/2023



Document Path: H:\TIG\USCG\CDU\Oakland\02050511 - Dredging\Figures\Tongue Point\BEPT 2023.pptx\Slide\Figure 3 - ODMDS Disposal Locations - JPA - Tongue Point.mxd
 HAH 3/23/2023

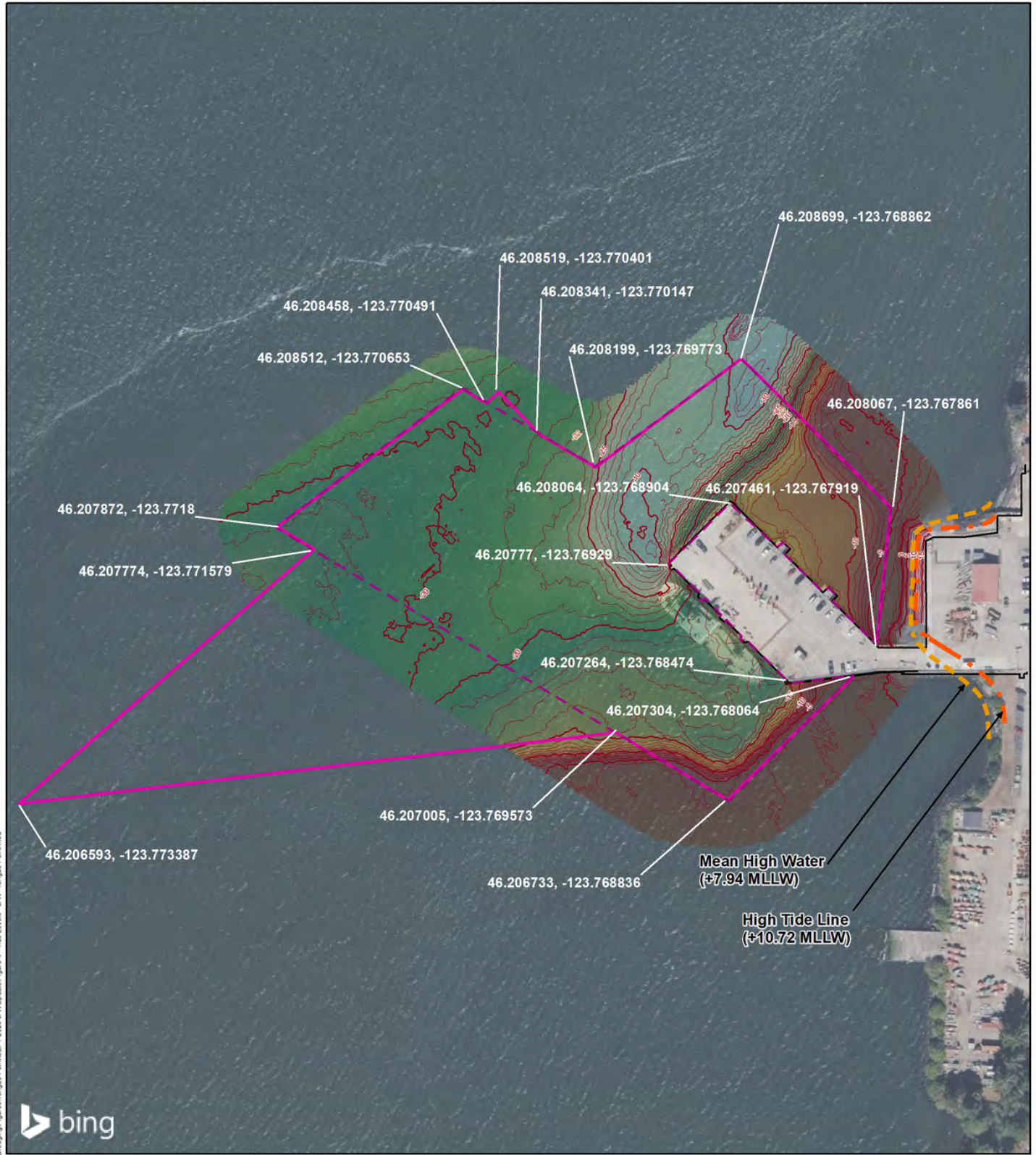
Figure 3. Mouth of Columbia River ODMDS Location Map, USCG ANT Tongue Point, Maintenance Dredging Project
 Astoria, Oregon
 September 2023

Legend
 ★ Site Location
 □ Potential Disposal Site



NOTES:
 1. COORDINATES ARE IN NORTH AMERICAN DATUM 83 (NAD 83) DECIMAL DEGREES.
 2. COORDINATES OF THE OCEAN DREDGED MATERIAL DISPOSAL SITES ARE FROM THE FEDERAL REGISTER. (FINAL RULE). OCEAN DUMPING; DE-DESIGNATION OF OCEAN DREDGED MATERIAL DISPOSAL SITES AND DESIGNATION OF NEW SITES, 70 FR 10041 (MARCH 2, 2005)





Document Path: H:\1\GIS\USCG\ANT\2023\2023_09\Map\2023_09_04_Tide Levels - JPA - Tongue Point.mxd
 Dredging\Figures\Tongue Point\SEPT 2023_09\Map\2023_09_04_Tide Levels - JPA - Tongue Point.mxd

Figure 4. High Tide Line and Mean High Water Mark, USCG ANT Tongue Point Maintenance Dredging Project
 Astoria, Oregon
 September 2023

<p>Legend</p> <ul style="list-style-type: none"> — Mean High Water - - - High Tide Line 2023/2024 Dredge Footprint Maintenance Dredge Footprint (DMMU 1) Existing Dock Infrastructure Bathymetric Contour — 5 ft - - - 1 ft 	
---	--

NOTES:

1. BATHYMETRIC DATA IS FROM A SURVEY CONDUCTED BY DIXON MARINE SERVICES, INC. ON NOVEMBER 12, 2022 AND REPRESENTS THE SEAFLOOR CONDITIONS PRESENT ON THAT DATE.
2. HORIZONTAL DATUM IS BASED ON THE OREGON STATE PLANE COORDINATE SYSTEM, FIPS 3601 (NAD 83).
3. SOUNDINGS ARE IN FEET BELOW MLLW.
4. TIDE DATUM OBTAINED FROM TIDESANDCURRENTS.NOAA.GOV FOR NEAREST STATION (ASTORIA, OR).
5. DREDGE PRISM COORDINATES ARE IN NAD 83 DECIMAL DEGREES.

